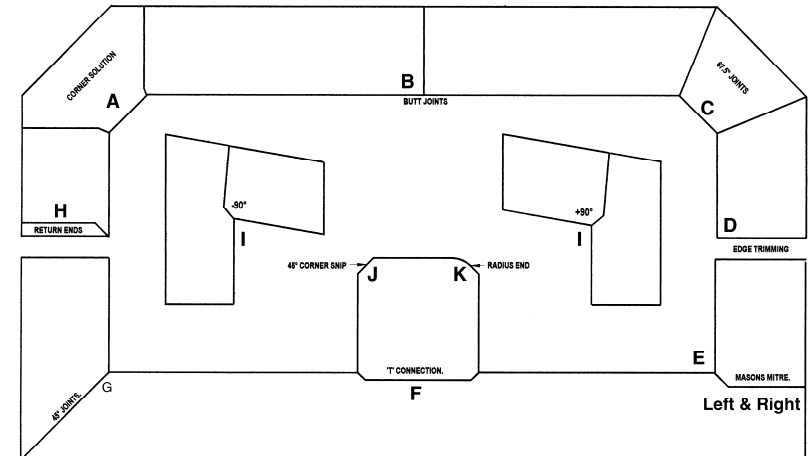
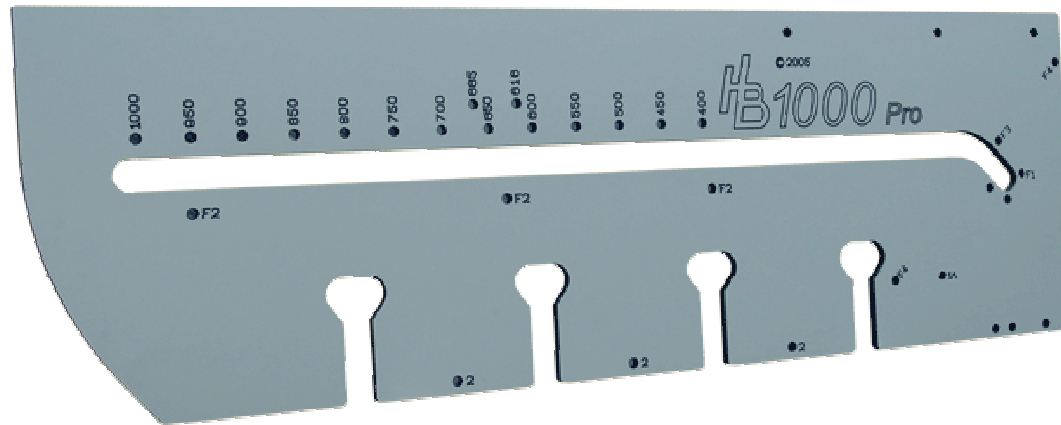


TOP-FORM 1000-PRO. MITRE JIG.

A PERFECT WORKTOP JOINT IN MINUTES.



Additional equipment required to successfully use this jig.

- 1) A ½" heavy-duty hand router fitted with a 30mm template guide.
- 2) A tungsten carbide tipped router bit 12.7mm x 50mm (½" x 2").
- 3) Two padded G-clamps.
- 4) 150mm curved bracket connecting bolts.
- 5) Kolor-Bond worktop joint sealant.

Possible connections:

- Left and right hand mason mitres.
- Diagonal corner solutions.
- Straight 45° Joints.
- Straight 67.5° Joints.
- Straight Butt joints.
- "T" Connection.
- Peninsular ends, Radius & 45°
- Cuts worktops up to 1000mm deep.
- Four open ended bolt slots for quick & easy machining.
- Non wear profile prolongs life.
- Precision 20mm, wobble free location pins for accurate alignment.
- Durable anti friction surface.
- Guaranteed Accuracy.
- Lightweight.
- Simple to use.
- Made from Tough high -pressure compact laminate

Manufactured By:

Topform Products UK Ltd, PO Box 1245, Clutton, BS39 5YG.

FAX: 01761-451099.

INT. FAX: +44-1761 451099

Email: sales@topformproducts.com © 1983 - 2006.

GENERAL GUIDELINES

PREPARATION

- 1) Ensure that the work area is clear and free of any obstacles.
- 2) Make sure that the worktop you are about to cut is supported sufficiently.
- 3) Check your router cutter is inserted properly into the machine; also check it for wear. **Do not use blunt cutters.**
- 4) Check the diameter of the router cutter, it must be **12.7mm (1/2")**
- 5) Check the diameter of the template guide fitted to the base plate of the router. It must be **30mm**. No other size can be used. Check it is properly secured.

- 6) In every case and with **no exceptions**, male & female cuts on the left-hand end of the worktop are always made with the worktop placed face down on the bench. Male & female cuts made on the right hand end of the worktop are always made with the worktop placed face up on the bench.

- 7) Place location pegs into the template for the particular cut you are making as indicated on drawing. Turn the jig over and position it as shown with the pegs resting firmly against the worktop

- 8) Make sure that the template is securely clamped to the worktop and the clamps do not foul the path of the router

MACHINING:

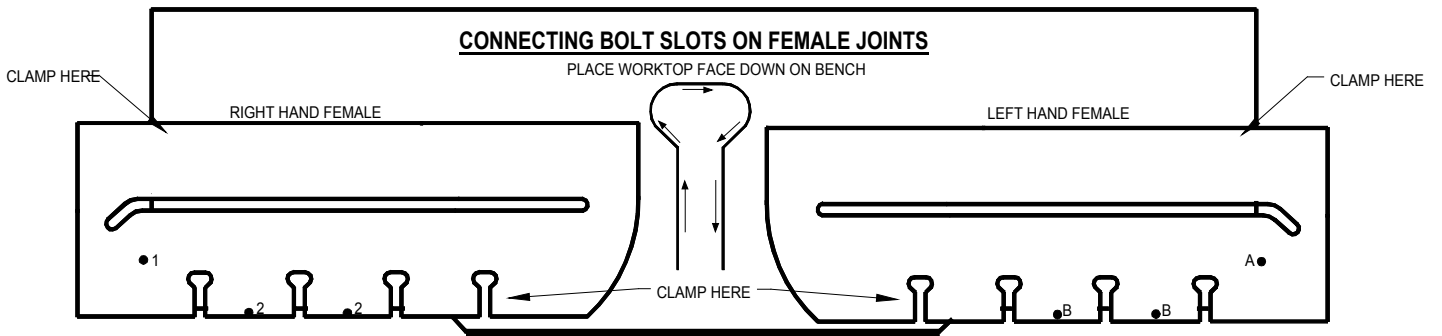
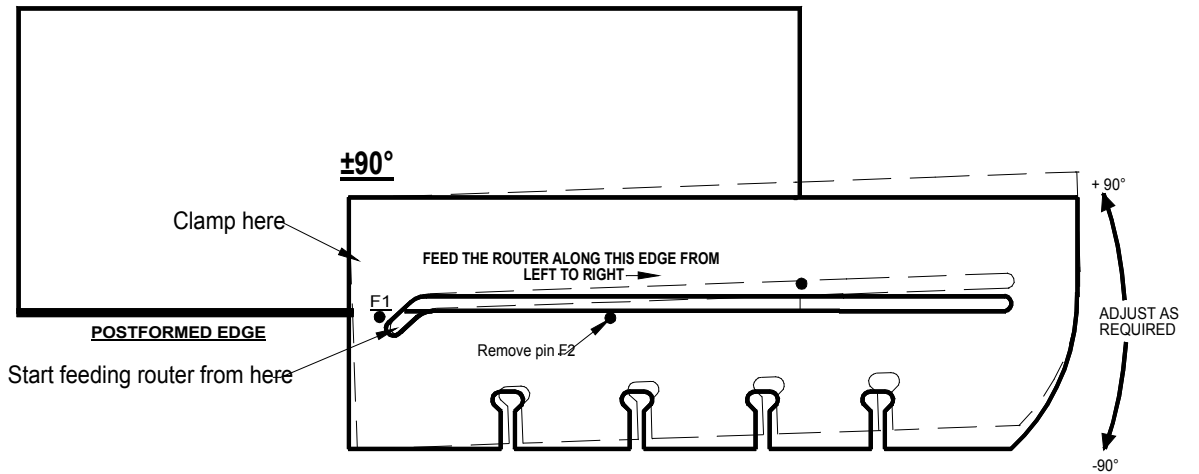
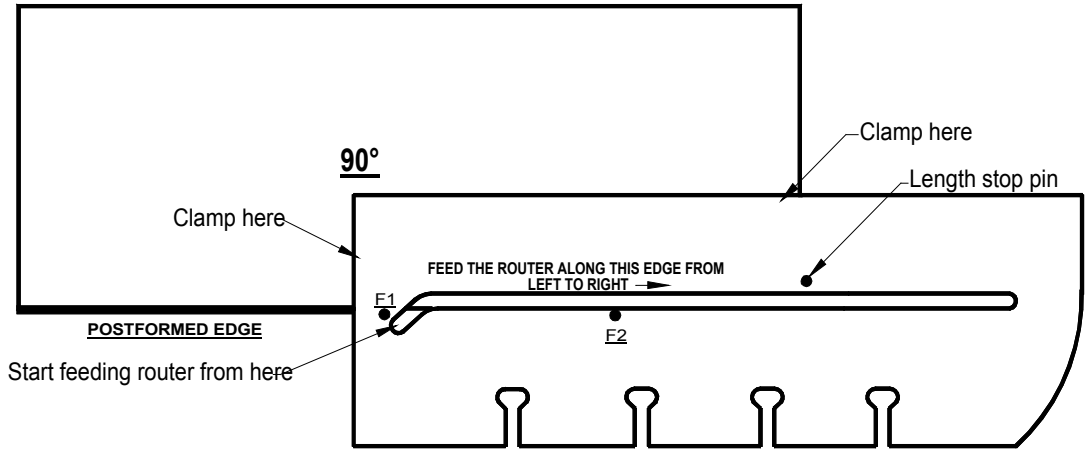
- 1) Use the 30mm template guide fitted to the base plate of the router to guide the machine along the centre slot of the template. Please note the centre slot is two sided. Pressure should be applied away from you.
- 2) Feed the router from left to right and into the front edge of the worktop, at a cutting depth of 10-12mm each time until all the material is removed.
- 3) Do not attempt to force the router through the workpiece. Change the cutter if necessary.
- 4) While machining, keep the feedrate steady, keep the router horizontal to the workpiece, do not stop or tilt the router
- 5) Never withdraw the cutter from the template whilst still rotating. Wait until it has completely stopped.

CUTTING LEFT & RIGHT HAND FEMALE JOINTS.

LEFT HAND FEMALE:
CUT WITH WORKTOP
FACE DOWN ON BENCH

POSTFORMED EDGE.

RIGHT HAND FEMALE:
CUT WITH WORKTOP
FACE UP ON BENCH



Manufactured By:

Topform Products UK Ltd, PO Box 1245, Clutton, BS39 5YG.

FAX: 01761-451099. INT. FAX: +44-1761 451099

Email: sales@topformproducts.com © 1983 - 2006.

CUTTING LEFT & RIGHT HAND MALE JOINTS.

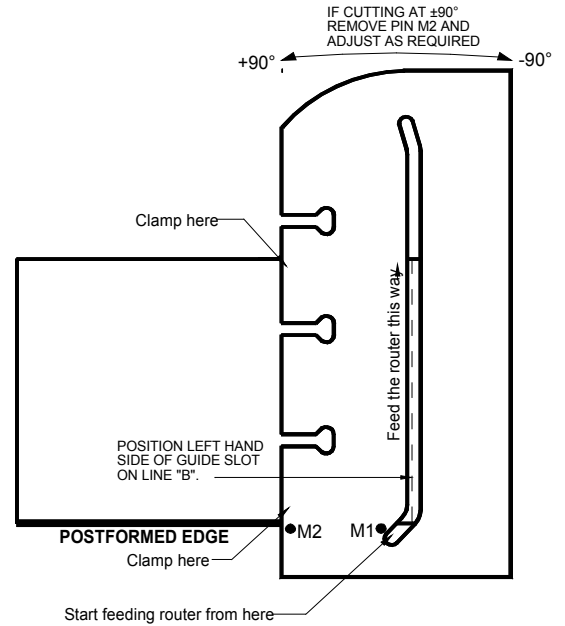
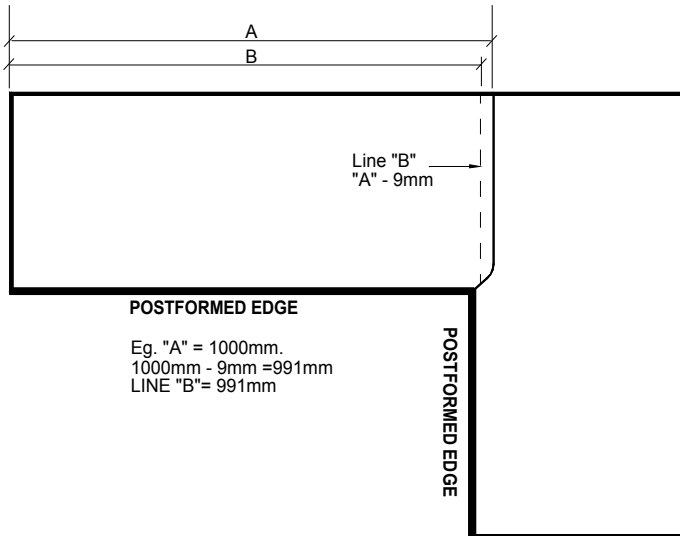
700 & 1000mm JIG (700mm shown)

LEFT HAND MALE:
CUT WITH WORKTOP
FACE DOWN ON BENCH.

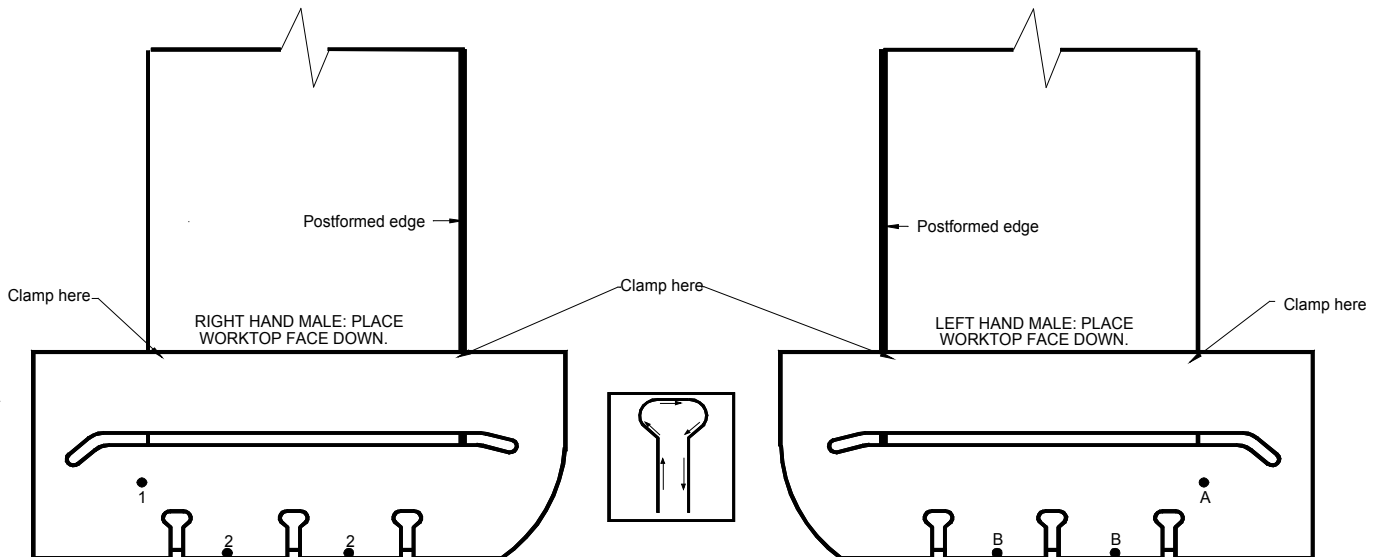
RIGHT HAND MALE:
CUT WITH WORKTOP
FACE UP ON BENCH.



POSTFORMED EDGE

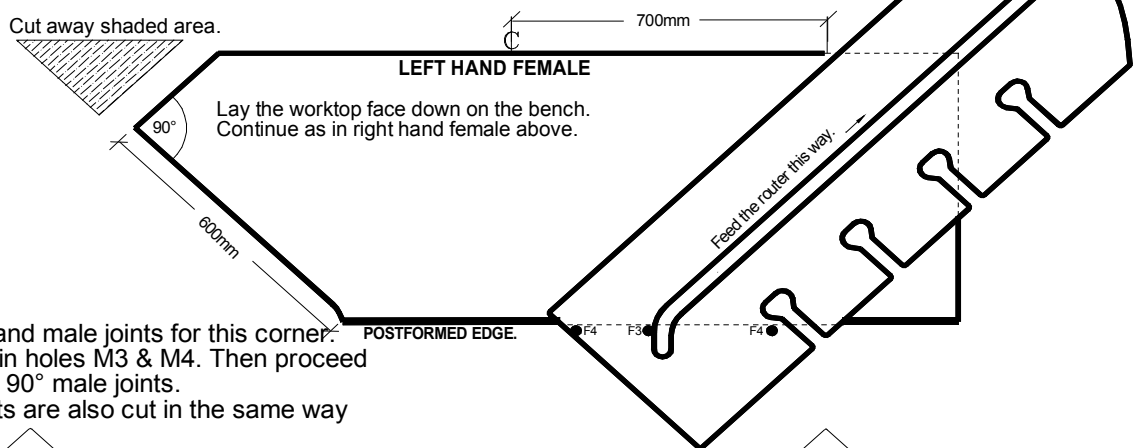
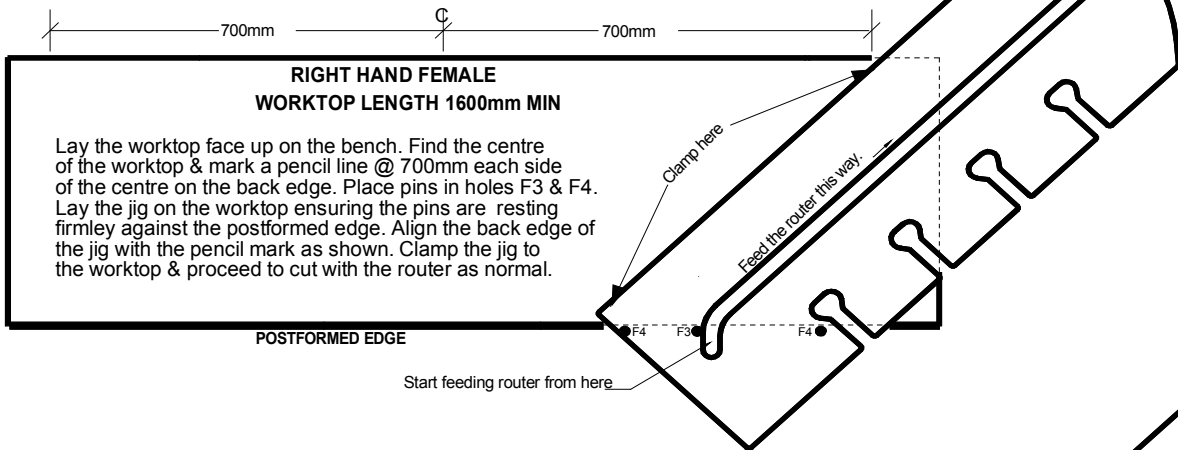
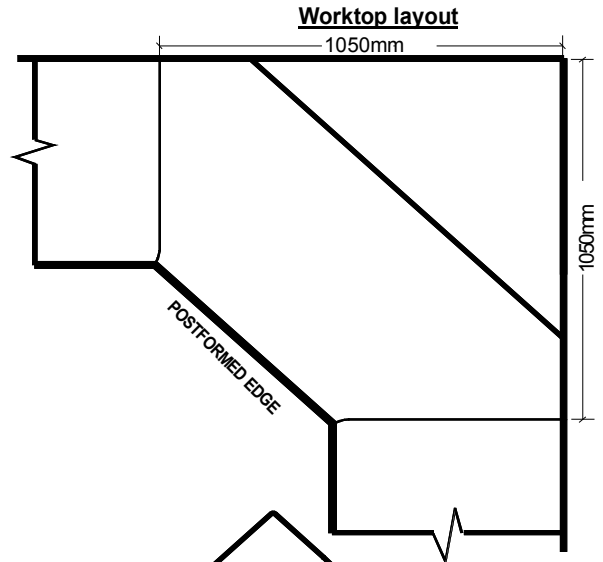
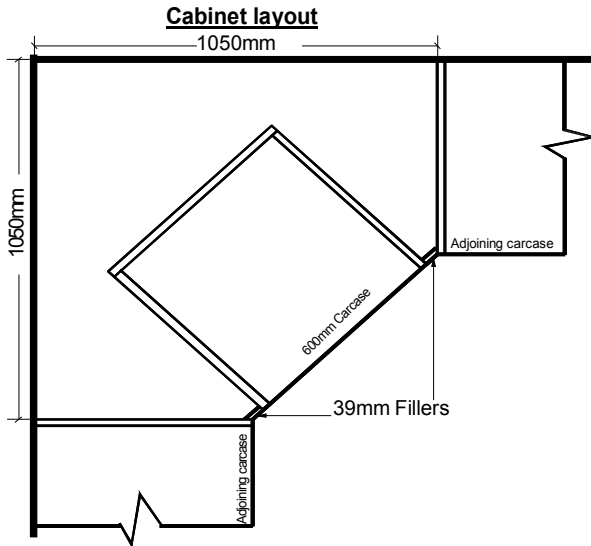


Connecting Bolt Slots



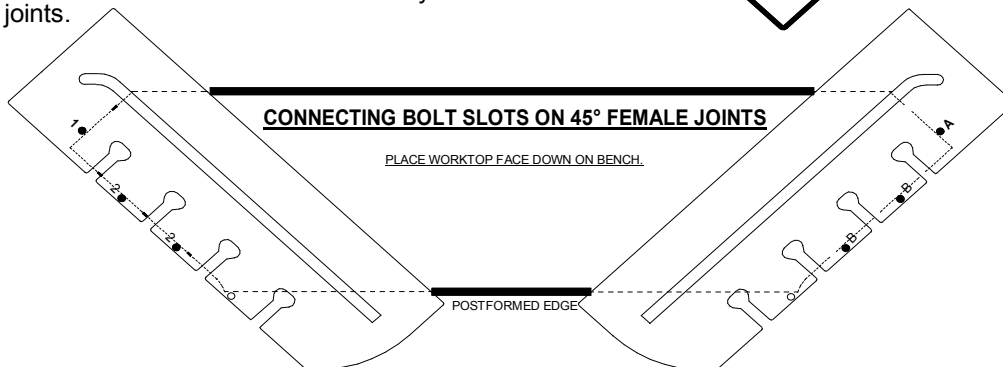
Manufactured By:
Topform Products UK Ltd, PO Box 1245, Clutton, BS39 5YG.
FAX: 01761-451099.
INT. FAX: +44-1761 451099
Email: sales@topformproducts.com

45° DIAGONAL CORNER SOLUTION



Male Joints.

To cut left & right hand male joints for this corner. Place location pins in holes M3 & M4. Then proceed in the same way as 90° male joints. Connecting bolt slots are also cut in the same way as 90° male joints.

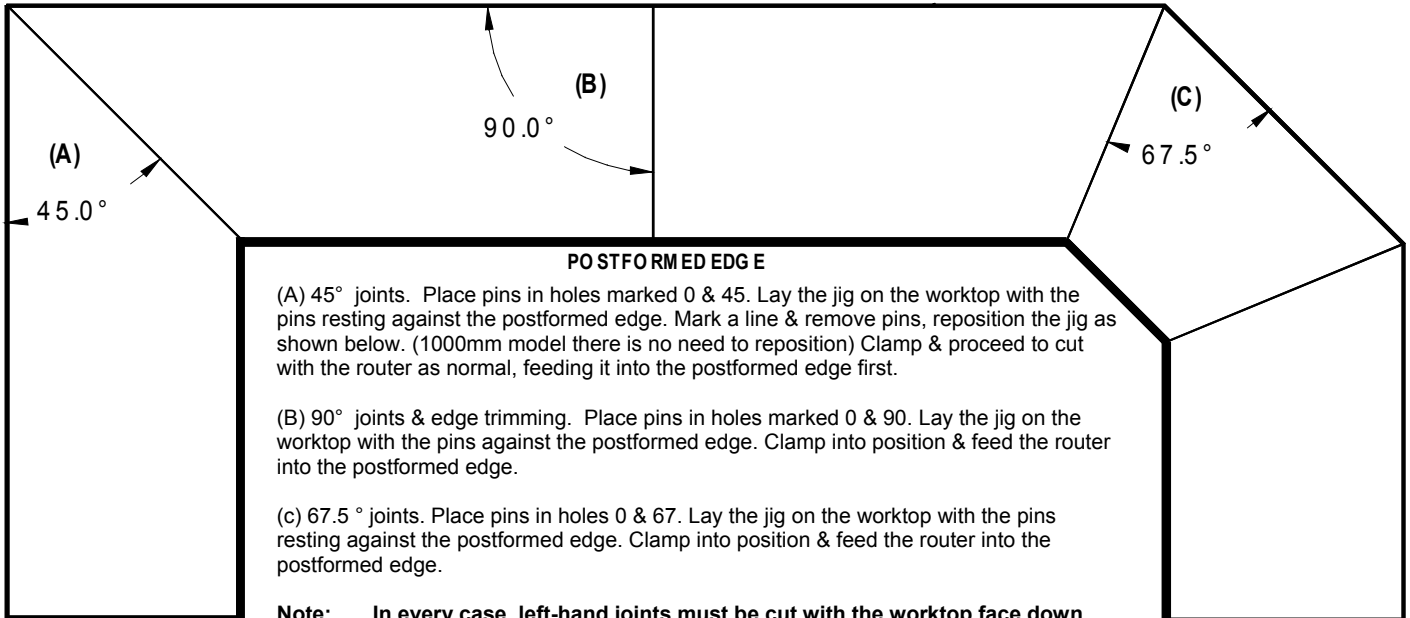


Manufactured By:

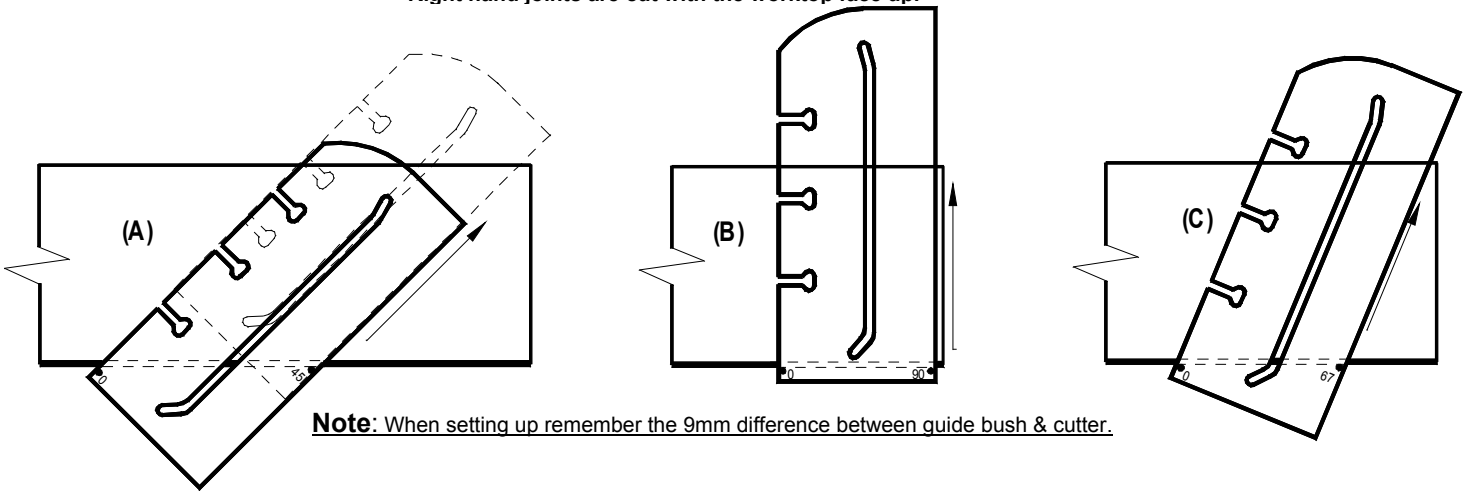
Topform Products UK Ltd, PO Box 1245, Clutton, BS39 5YG. FAX: 01761-451099. INT. FAX: +44-1761 451099

Email: sales@topformproducts.com © 1983 - 2006.

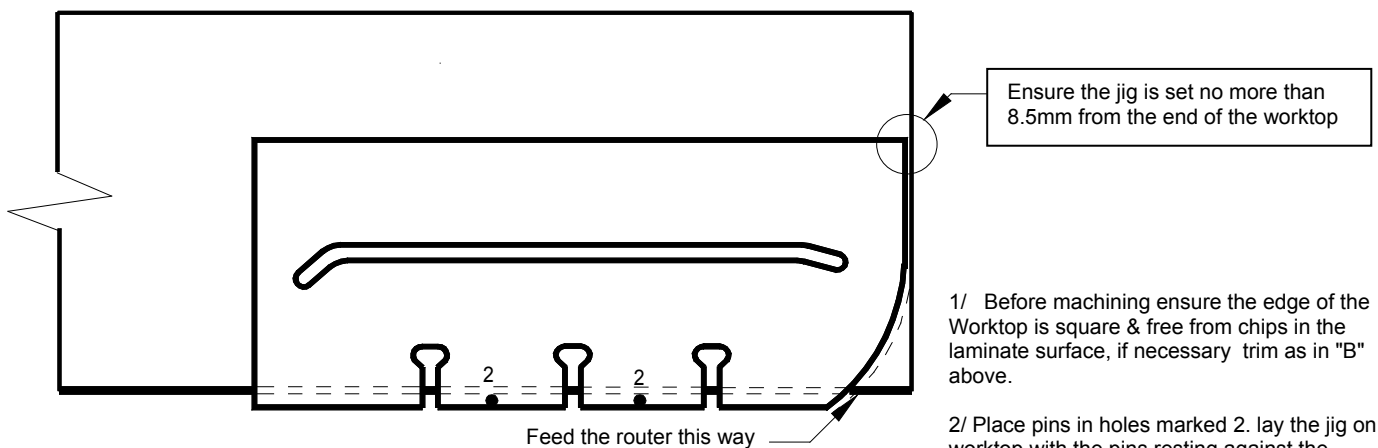
CUTTING LEFT & RIGHT HAND STRAIGHT JOINTS. 700mm & 1000mm JIG. (700 shown)



Note: In every case, left-hand joints must be cut with the worktop face down. Right hand joints are cut with the worktop face up.



CUTTING LEFT & RIGHT HAND RADIUS END'S.



1/ Before machining ensure the edge of the Worktop is square & free from chips in the laminate surface, if necessary trim as in "B" above.

2/ Place pins in holes marked 2. lay the jig on the worktop with the pins resting against the postformed edge. clamp into position & feed the router into the postformed edge.

Note: In all cases, left hand radius ends must be cut with the worktop face down. Right hand ends are cut with the worktop face up.

Manufactured By:
 Topform Products UK Ltd, PO Box 1245, Clutton, BS39 5YG.
 FAX: 01761-451099.
 INT. FAX: +44-1761 451099
 Email: sales@topformproducts.com © 1983 - 2006.